



4 Report No.	LAB2110565-01
4 Report Version	V1
4 Total Pages	8

SHENZHEN REFOND OPTOELECTRONICS CO., LTD. LAB CENTER

Testing Report

Product No. RF-A1F30-W1DD-B1

Application 4 Y F Y YH C

Testing Item 4

Testing Report

Product No.	RF-A1F30-W1DD-B1	Batch No.	SC17-210800043
Sample Status		Samples Quantity	10
Principal		Tel	15755057052
Subcontract or not		Samples Received Date	2021/10/30
Test Specification:	2 B GB/T 2423.2-2008,		
	LED CIE127 2007		

Test Conclusion: Pass NA Fail

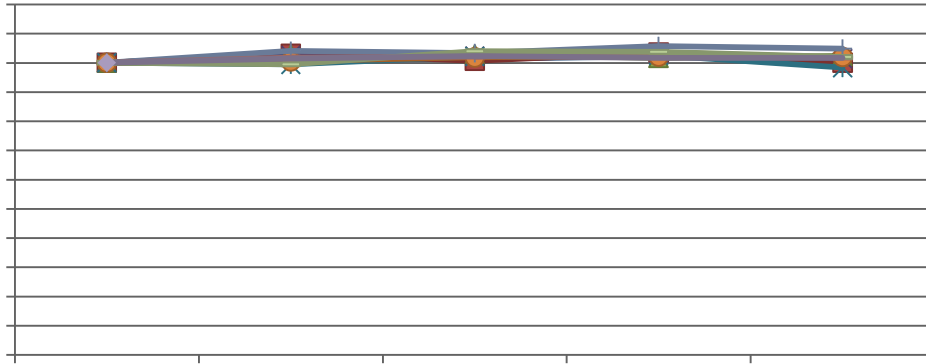
Prepared By	<u>刘在权</u>	Title		Date	2021/12/30
Approved By	<u>刘琪</u>	Title		Date	2021/12/31

/Instructions:

- Report is invalid if no signature for the captions "Prepared by" and "Approved by".
- Without the written approval of the laboratory may not be copied part of this report.
- Report is invalid if altered.
- If no special notes in this report, the results are only related to the tested specimens.

Testing Report

()N_{mn} Cn
 ,()M f No. : 1#-10#
 -()I l nil
 .()N_{mn} n 4 2021/11/1-2021/12/23
 /()F fc n ih cncihm4 , , , 2 - 1 LB
 0()N_{mn} ih cncihm4
 4, / , . B 2/)0 LB 02B - M N C L .
 / B / , ,
 b 02b --0b / . b b
 1() _ n h _ lcn_lcih
 , (, P R)S4 (,
 2()N_{mn} koc _hn4
 " 3 - . 1 " 3 - 3 " 3 - 3 2 -)
 " 3 , - F 3 . , -
 3()N_{mn} n 4
 "f

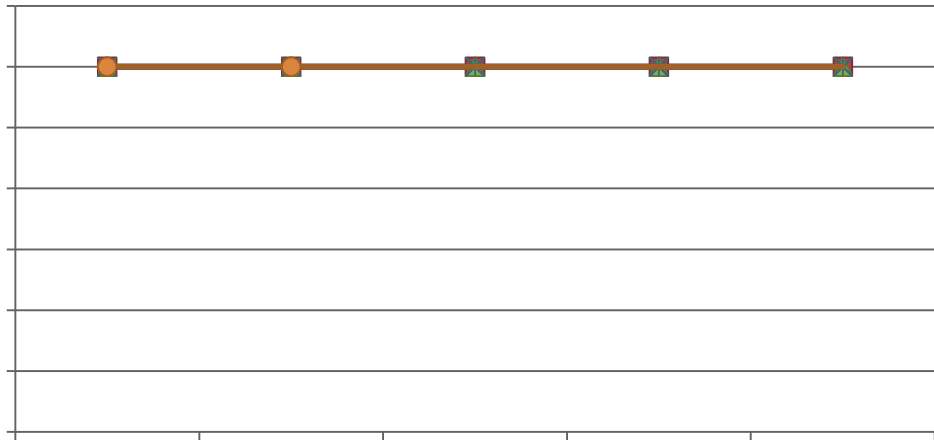


P P

REFOND

REFOND

REFOND



OND



REFOND

REFOND

REFOND



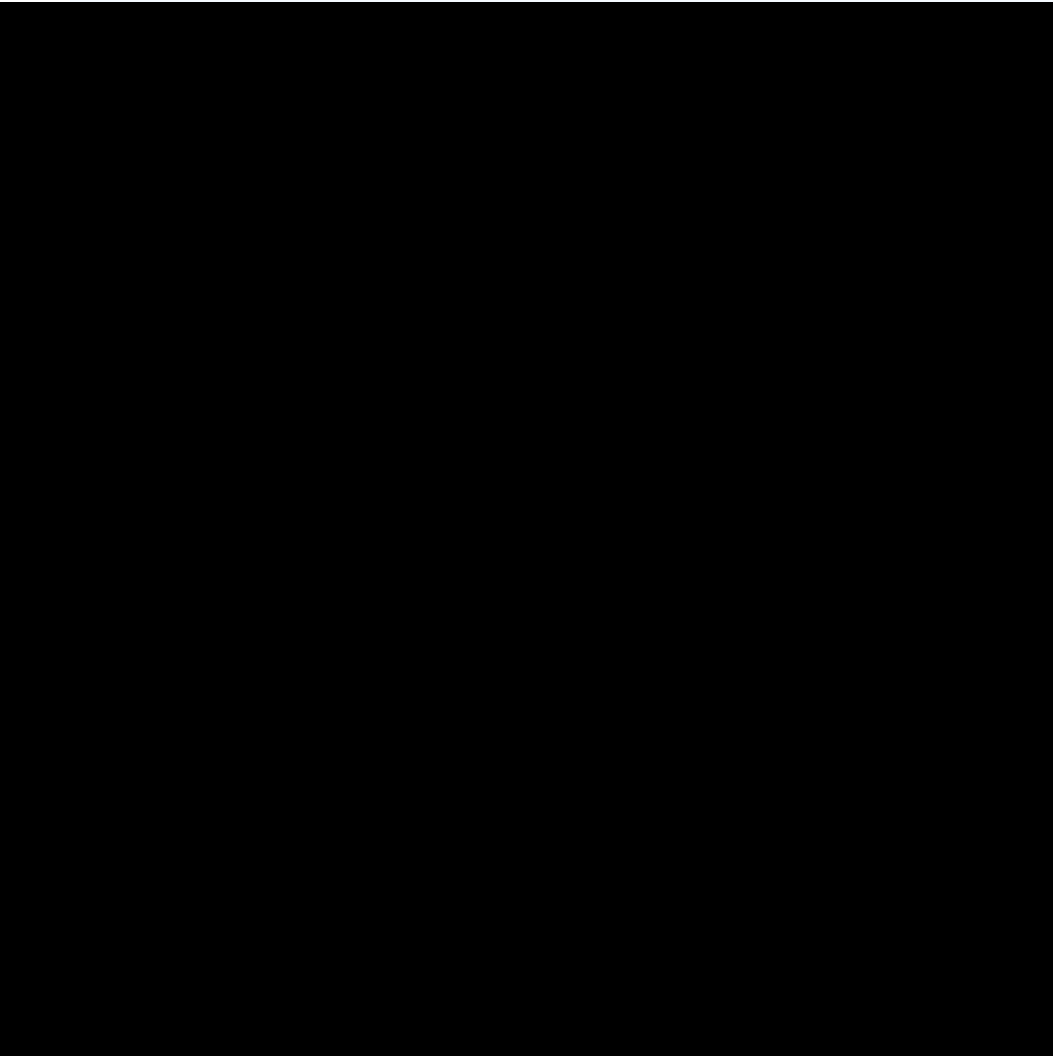
	0h	168h	336h	504h	1000h	0h	168h	336h	504h	1000h
1#	45.24	45.62	45.84	46.22	46.15	100.00%	100.84%	101.33%	102.17%	102.01%
2#	43.91	45.27	44.23	45.47	43.94	100.00%	103.10%	100.73%	103.55%	100.07%
3#	44.96	46.26	46.24	45.70	45.99	100.00%	102.89%	102.85%	101.65%	

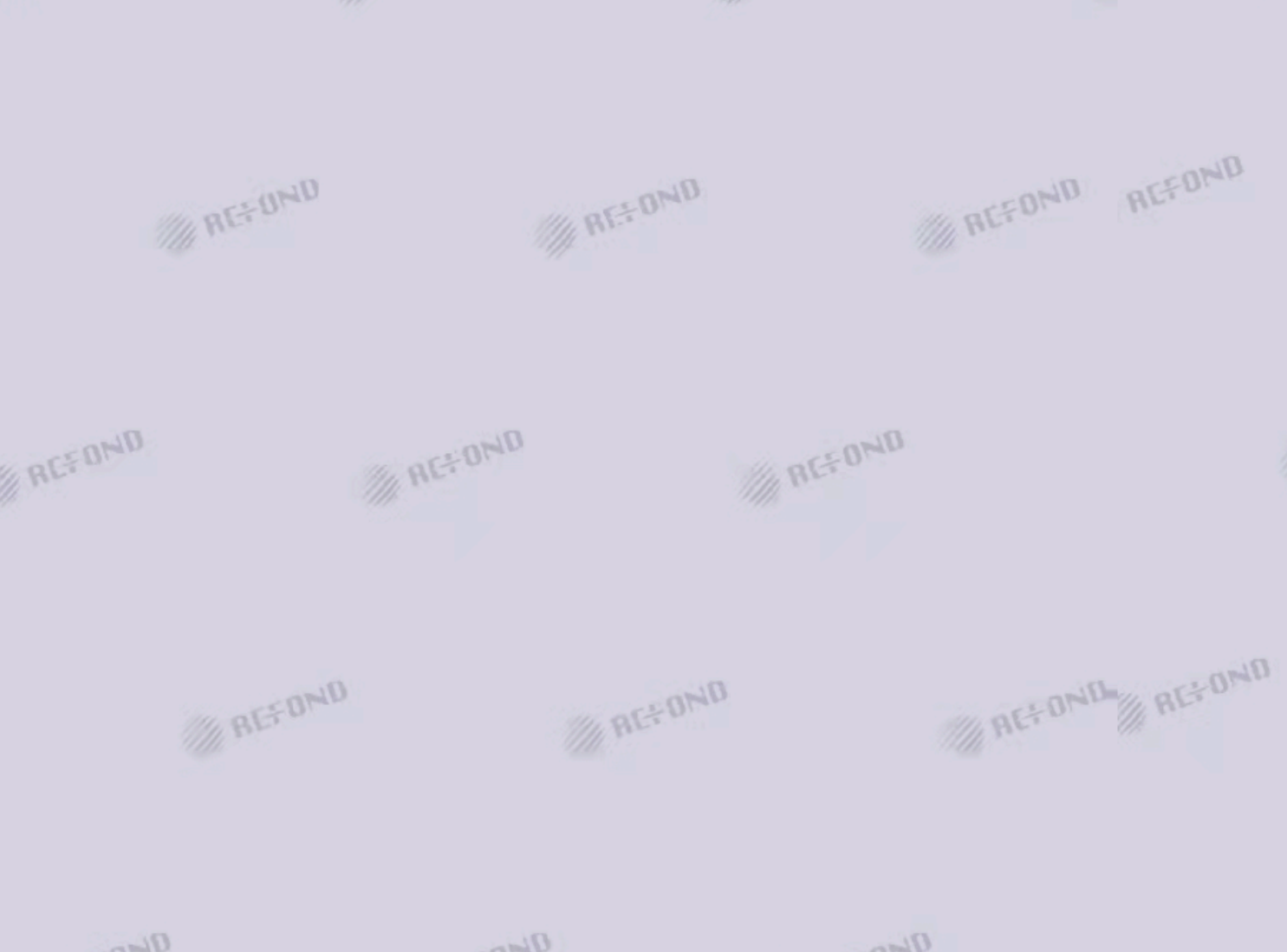
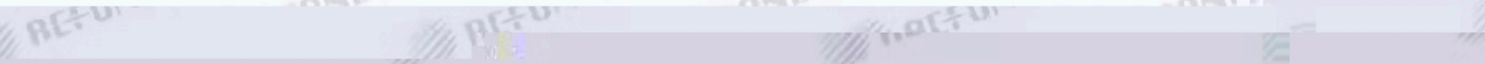
REFOND

REFOND

REFOND

AND

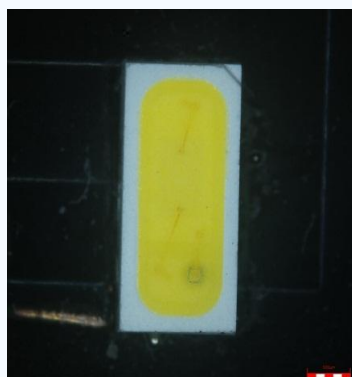




	x								
	0h	168h	336h	504h	1000h	168h	336h	504h	1000h
1#	0.2798	0.2801	0.2805	0.2805	0.2802	0.0003	0.0007	0.0007	0.0004
2#	0.2769	0.2771	0.2770	0.2769	0.2756	0.0002	0.0001	0.0000	-0.0013
3#	0.2778	0.2779	0.2783	0.2783	0.2774	0.0001	0.0005	0.0005	-0.0004
4#	0.2827	0.2827	0.2831	0.2828	0.2816	0.0000	0.0004	0.0001	-0.0011
5#	0.2778	0.2778	0.2781	0.2778	0.2769	0.0000	0.0003	0.0000	-0.0009
6#	0.2814	0.2815	0.2820	0.2818	0.2809	0.0001	0.0006	0.0004	-0.0005
7#	0.2834	0.2836	0.2842	0.2842	0.2833	0.0002	0.0008	0.0008	-0.0001
8#	0.2774	0.2777	0.2782	0.2779	0.2771	0.0003	0.0008	0.0005	-0.0003
9#	0.2823	0.2823	0.2831	0.2830	0.2821	0.0000	0.0008	0.0007	-0.0002
10#	0.2813	0.2813	0.2820	0.2818	0.2808	0.0000	0.0007	0.0005	-0.0005
Min	0.2769	0.2771	0.2770	0.2769	0.2756	0.0000	0.0001	0.0000	-0.0013
Max	0.2834	0.2836	0.2842	0.2842	0.2833	0.0003	0.0008	0.0008	0.0004
Avg	0.2801	0.2802	0.2807	0.2805	0.2796	0.0001	0.0006	0.0004	-0.0005
Spec	NA					-0.02~0.02			

	y								
	0h	168h	336h	504h	1000h	168h	336h	504h	1000h
1#	0.2657	0.2679	0.2680	0.2680	0.2680	0.0022	0.0023	0.0023	0.0023
2#	0.2594	0.2613	0.2604	0.2599	0.2582	0.0019	0.0010	0.0005	-0.0012
3#	0.2616	0.2635	0.2637	0.2635	0.2625	0.0019	0.0021	0.0019	0.0009
4#	0.2727	0.2745	0.2745	0.2739	0.2723	0.0018	0.0018	0.0012	-0.0004
5#	0.2628	0.2647	0.2646	0.2639	0.2627	0.0019	0.0018	0.0011	-0.0001
6#	0.2715	0.2734	0.2736	0.2730	0.2720	0.0019	0.0021	0.0015	0.0005
7#	0.2749	0.2771	0.2775	0.2774	0.2762	0.0022	0.0026	0.0025	0.0013
8#	0.2612	0.2636	0.2638	0.2632	0.2625	0.0024	0.0026	0.0020	0.0013
9#	0.2730	0.2746	0.2755	0.2752	0.2740	0.0016	0.0025	0.0022	0.0010
10#	0.2684	0.2699	0.2705	0.2701	0.2687	0.0015	0.0021	0.0017	0.0003
Min	0.2594	0.2613	0.2604	0.2599	0.2582	0.0015	0.0010	0.0005	-0.0012
Max	0.2749	0.2771	0.2775	0.2774	0.2762	0.0024	0.0026	0.0025	0.0023
Avg	0.2671	0.2691	0.2692	0.2688	0.2677	0.0019	0.0021	0.0017	0.0006
Spec	NA					-0.02~0.02			

()N_mn L_mofn4



()N_mn ih fomcih

, ()L_ le H)

) H