



Report No.	LAB2110565-03
Report Version	V1
Total Pages	7

SHENZHEN REFOND OPTOELECTRONICS CO., LTD. LAB CENTER

## Testing Report

**Product No.** RF-A1F30-W1DD-B1  
\_\_\_\_\_  
**Application** \_\_\_\_\_  
**Testing Item** \_\_\_\_\_

# Testing Report

Product No. RF-A1F30-W1DD-B1

Batch No. SC17-210800043

Sample Status \_\_\_\_\_

Samples Quantity 10

Principal \_\_\_\_\_

Tel 15755057052

Subcontract or not \_\_\_\_\_

Samples Received Date 2021/10/30

Test Specification: N GB/T 2423.22-2012  
LED CIE127 2007

Test Conclusion:  [ V ] Pass  [ ] NA  [ ] Fail

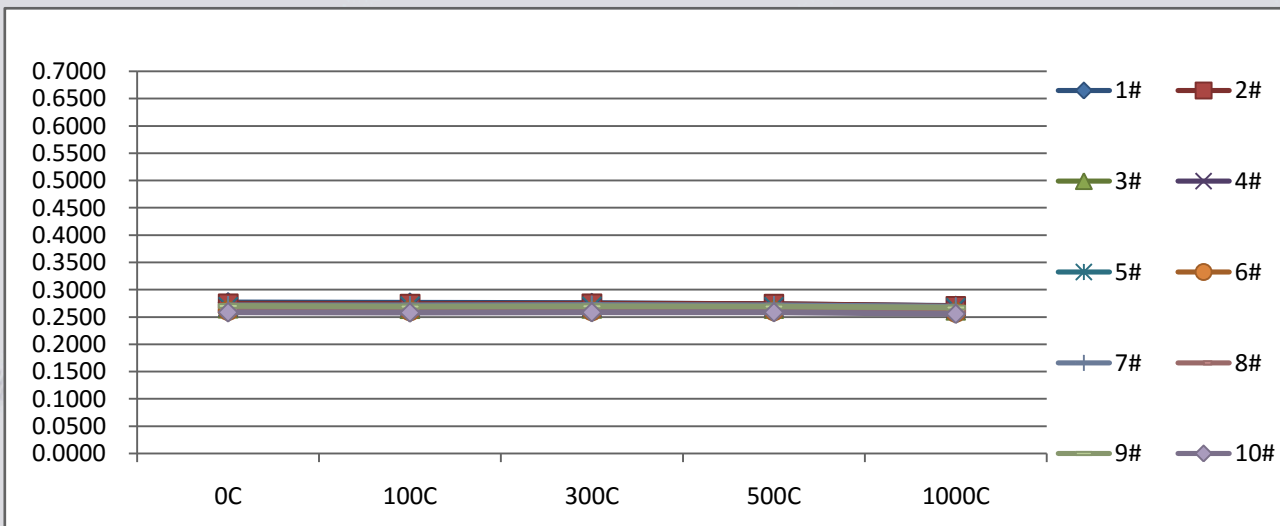
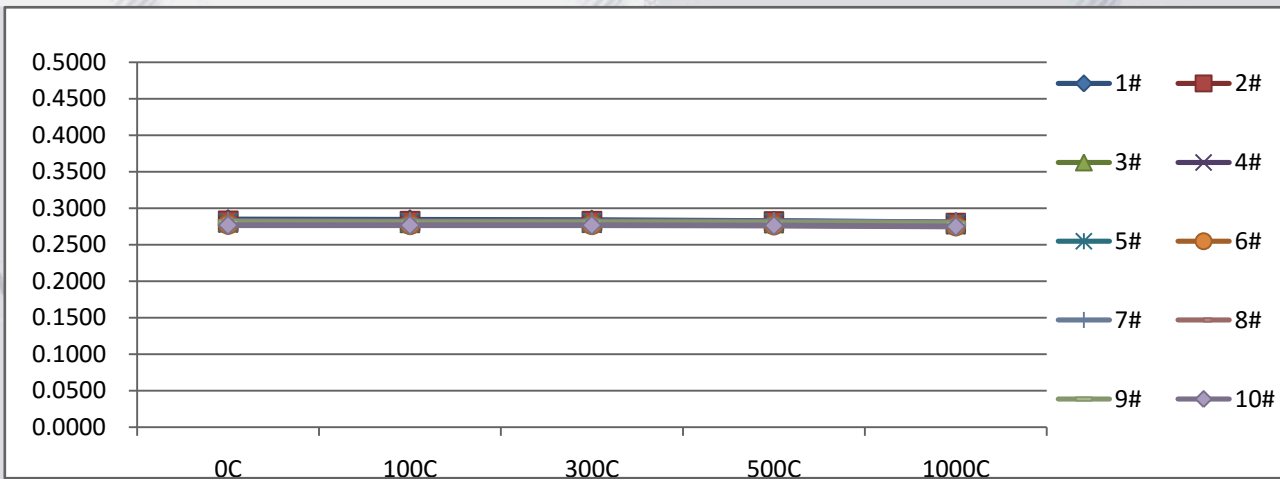
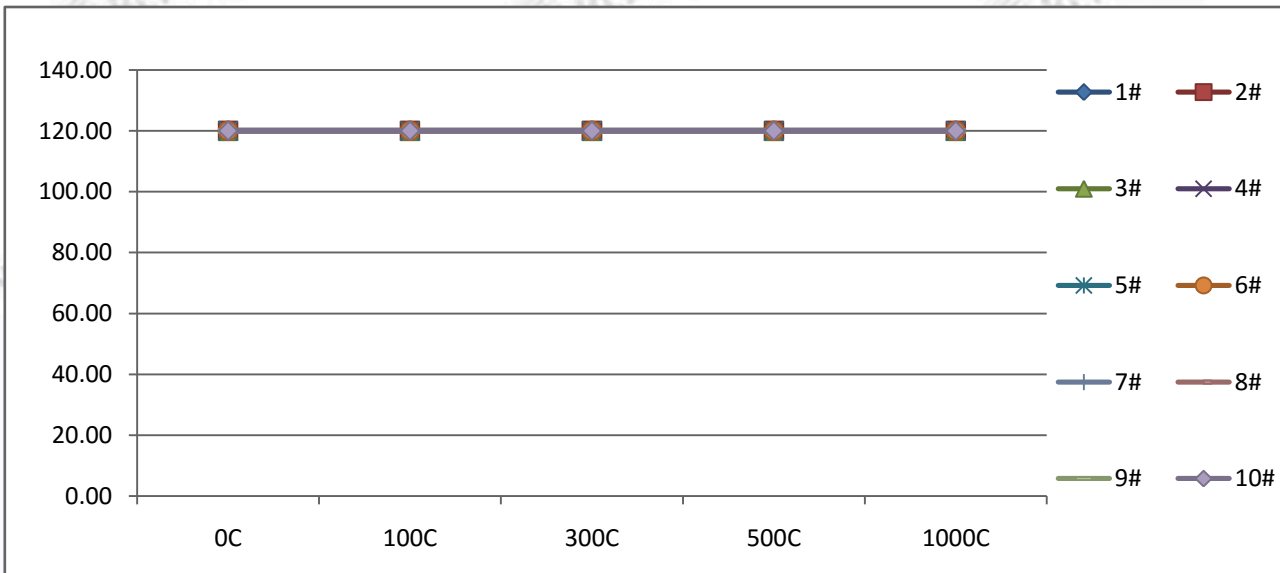
Prepared By 刘在权 Title \_\_\_\_\_ Date 2022/1/6

Approved By 刘琪 Title \_\_\_\_\_ Date 2022/1/6

### /Instructions:

1. Report is invalid if no signature for the captions "Prepared by" and "Approved by".
2. Without the written approval of the laboratory may not be copied part of this report.
3. Report is invalid if altered.
4. If no special notes in this report, the results are only related to the tested specimens.
5. This report shall not be reproduced without the written approval of laboratory and Refond owns the Copyright of all the reports.





	(lm)					Lumen Maintenance (%)				
	0C	100C	300C	500C	1000C	0C	100C	300C	500C	1000C
1#	45.44	44.79	43.36	45.01	43.57	100.00%	98.57%	95.42%	99.05%	95.88%
2#	44.74	44.27	44.17	44.86	42.80	100.00%	98.95%	98.73%	100.27%	95.66%
3#	43.42	43.48	42.74	43.39	41.44	100.00%	100.14%	98.43%	99.93%	95.44%
4#	41.36	40.37	41.11	41.29	40.17	100.00%	97.61%	99.40%	99.83%	97.12%
5#	45.51	45.36	43.37	45.80	45.14	100.00%	99.67%	95.30%	100.64%	99.19%
6#	43.48	43.72	42.97	43.53	42.25	100.00%	100.55%	98.83%	100.11%	97.17%
7#	42.47	43.43	42.99	42.73	42.41	100.00%	102.26%	101.22%	100.61%	99.86%
8#	41.10	41.73	41.51	41.10	40.08	100.00%	101.53%	101.00%	100.00%	97.52%
9#	43.37	43.23	42.29	43.03	42.76	100.00%	99.68%	97.51%	99.22%	98.59%
10#	42.55	42.75	41.63	42.73	41.00	100.00%	100.47%	97.84%	100.42%	96.36%
Min	41.10	40.37	41.11	41.10	40.08	100.00%	97.61%	95.30%	99.05%	95.44%
Max	45.51	45.36	44.17	45.80	45.14	100.00%	102.26%	101.22%	100.64%	99.86%
Avg	43.34	43.31	42.61	43.35	42.16	100.00%	99.94%	98.37%	100.01%	97.28%
Spec	NA					80%				

	VF (V)								
	0C	100C	300C	500C	1000C	100C	300C	500C	1000C
1#	3.026	3.029	3.004	3.011	3.002	0.003	-0.022	-0.015	-0.024
2#	3.012	3.013	2.996	2.996	2.988	0.001	-0.016	-0.016	-0.024
3#	3.032	3.031	3.014	3.015	3.011	-0.001	-0.018	-0.017	-0.021
4#	3.007	2.999	2.991	2.991	2.989	-0.008	-0.016	-0.016	-0.018
5#	3.057	3.048	3.036	3.039	3.038	-0.009	-0.021	-0.018	-0.019
6#	3.014	3.015	2.993	2.998	2.995	0.001	-0.021	-0.016	-0.019
7#	3.027	3.032	3.015	3.013	3.013	0.005	-0.012	-0.014	-0.014
8#	3.022	3.031	3.014	3.007	3.013	0.009	-0.008	-0.015	-0.009
9#	3.028	3.035	3.019	3.011	3.016	0.007	-0.009	-0.017	-0.012
10#	3.054	3.044	3.028	3.028	3.029	-0.010	-0.026	-0.026	-0.025
Min	3.007	2.999	2.991	2.991	2.988	-0.010	-0.026	-0.026	-0.025
Max	3.057	3.048	3.036	3.039	3.038	0.009	-0.008	-0.014	-0.009
Avg	3.028	3.028	3.011	3.011	3.009	0.000	-0.017	-0.017	-0.019
Spec	NA					-0.2			

	IF (mA)				
	0C	100C	300C	500C	1000C
1#	120.00	120.00	120.00	120.00	120.00
2#	120.00	120.00	120.00	120.00	120.00
3#	120.00	120.00	120.00	120.00	120.00
4#	120.00	120.00	120.00	120.00	120.00
5#	120.00	120.00	120.00	120.00	120.00
6#	120.00	120.00	120.00	120.00	120.00
7#	120.00	120.00	120.00	120.00	120.00
8#	120.00	120.00	120.00	120.00	120.00
9#	120.00	120.00	120.00	120.00	120.00
10#	120.00	120.00	120.00	120.00	120.00
Min	120.00	120.00	120.00	120.00	120.00
Max	120.00	120.00	120.00	120.00	120.00
Avg	120.00	120.00	120.00	120.00	120.00
Spec	NA				

	x								
	0C	100C	300C	500C	1000C	100C	300C	500C	1000C
1#	0.2846	0.2841	0.2836	0.2825	0.2809	-0.0005	-0.0010	#####	-0.0037
2#	0.2827	0.2823	0.2825	0.2821	0.2800	-0.0004	-0.0002	#####	-0.0027
3#	0.2805	0.2800	0.2801	0.2797	0.2782	-0.0005	-0.0004	#####	-0.0023
4#	0.2798	0.2795	0.2794	0.2789	0.2779	-0.0003	-0.0004	#####	-0.0019
5#	0.2804	0.2808	0.2805	0.2801	0.2793	0.0004	0.0001	#####	-0.0011
6#	0.2776	0.2773	0.2772	0.2769	0.2756	-0.0003	-0.0004	#####	-0.0020
7#	0.2825	0.2821	0.2822	0.2819	0.2809	-0.0004	-0.0003	#####	-0.0016
8#	0.2795	0.2792	0.2792	0.2790	0.2780	-0.0003	-0.0003	#####	-0.0015
9#	0.2812	0.2808	0.2809	0.2803	0.2792	-0.0004	-0.0003	#####	-0.0020
10#	0.2769	0.2767	0.2769	0.2765	0.2751	-0.0002	0.0000	#####	-0.0018
Min	0.2769	0.2767	0.2769	0.2765	0.2751	-0.0005	-0.0010	#####	-0.0037
Max	0.2846	0.2841	0.2836	0.2825	0.2809	0.0004	0.0001	#####	-0.0011
Avg	0.2806	0.2803	0.2803	0.2798	0.2785	-0.0003	-0.0003	#####	-0.0021
Spec	NA					-0.02			

	y								
	0C	100C	300C	500C	1000C	100C	300C	500C	1000C
1#	0.2770	0.2762	0.2757	0.2736	0.2705	-0.0008	-0.0013	#####	-0.0065
2#	0.2746	0.2740	0.2745	0.2737	0.2697	-0.0006	-0.0001	#####	-0.0049
3#	0.2661	0.2652	0.2657	0.2654	0.2624	-0.0009	-0.0004	#####	-0.0037
4#	0.2682	0.2680	0.2677	0.2676	0.2652	-0.0002	-0.0005	#####	-0.0030
5#	0.2695	0.2704	0.2697	0.2695	0.2676	0.0009	0.0002	0.0000	-0.0019
6#	0.2616	0.2613	0.2611	0.2611	0.2582	-0.0003	-0.0005	#####	-0.0034
7#	0.2716	0.2716	0.2720	0.2714	0.2695	0.0000	0.0004	#####	-0.0021
8#	0.2642	0.2639	0.2642	0.2642	0.2622	-0.0003	0.0000	0.0000	-0.0020
9#	0.2702	0.2695	0.2700	0.2695	0.2672	-0.0007	-0.0002	#####	-0.0030
10#	0.2584	0.2583	0.2588	0.2586	0.2558	-0.0001	0.0004	0.0002	-0.0026
Min	0.2584	0.2583	0.2588	0.2586	0.2558	-0.0009	-0.0013	#####	-0.0065
Max	0.2770	0.2762	0.2757	0.2737	0.2705	0.0009	0.0004	0.0002	-0.0019
Avg	0.2681	0.2678	0.2679	0.2675	0.2648	-0.0003	-0.0002	#####	-0.0033
Spec	NA					-0.02			

