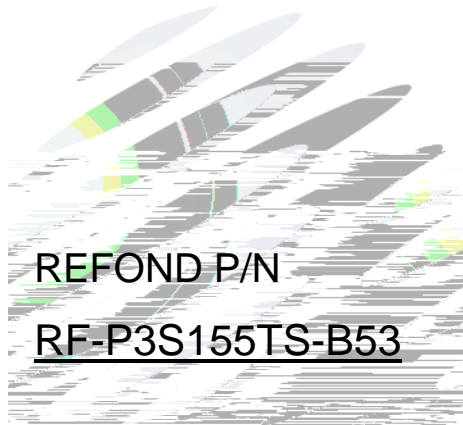


SPECIFICATION



REFOND P/N

RF-P3S155TS-B53

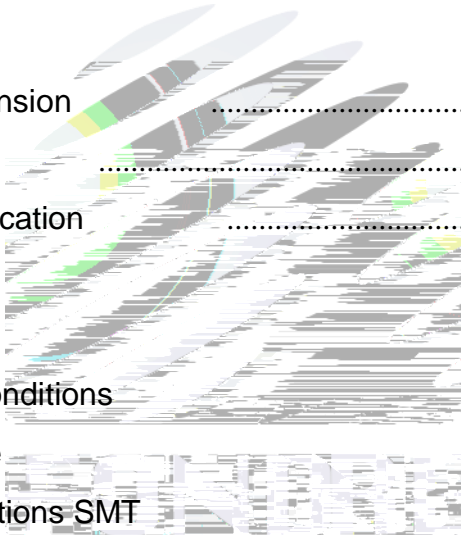


Mass Product



Contents

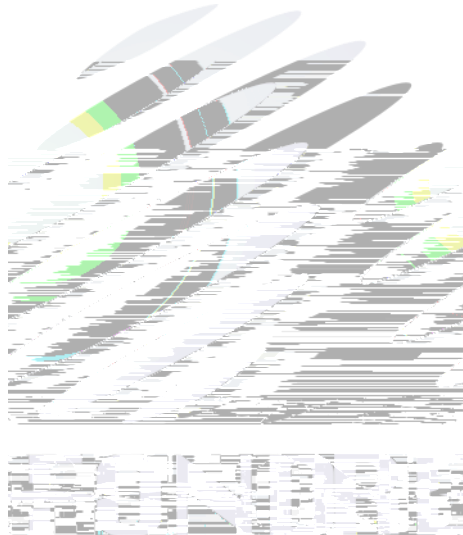
| | |
|--|----|
| 1. Description | |
| 1.1 General Description | |
| 1.2 Features | |
| 1.3 Application | |
| 1.4 Package Dimension | |
| 1.5 Product Parameters | |
| 1.6 Typical Optical Characteristics Curves | |
| 2. Packaging | |
| 2.1 Packaging Specification | |
| 2.1.1 Carrier Tape Dimension | 11 |
| 2.1.2 Reel Dimension | 11 |
| 2.1.3 Label Form Specification | 12 |
| 2.2 Moisture Resistant Packing | |
| 2.3 Cardboard Box | |
| 2.4 Reliability Test Items And Conditions | |
| 2.5 Criteria For Judging Damage | |
| 3. SMT Reflow Soldering Instructions SMT | |
| 3.1 SMT Reflow Soldering Instructions SMT | |
| 4. Handling Precautions | |
| 4.1 Handling Precautions | |



1. Description

1.1 General Description

The Colour LED which was fabricated using a yellow-green chip and orange chip , Package Dimension : 3.2mmX2.7mmX0.7mm.



3.2mmX2.7mmX0.7

1.4 Package Dimension

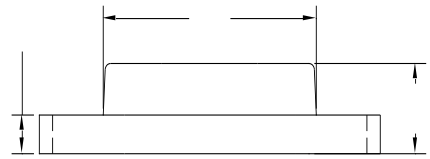


Fig.1-2 Side view

Fig.1-1 Top view

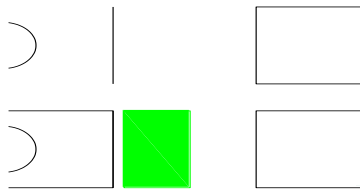


Fig.1-3 Bottom view

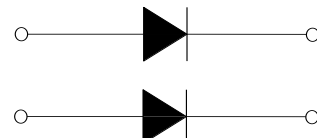


Fig.1-4 Polarity



Fig.1-5 Soldering patterns

Notes

All dimensions units are millimeters.

All dimensions tolerances are 0.2mm unless otherwise noted.



1.5 Product Parameters

Table 1-1 Electrical / Optical Characteristics at Ts=25°C

| Item | Test Condition | Symbol | | Code | Value | | | Unit |
|-------------------------|----------------------|--------------------|----|------|-------------|------|-------|------|
| | | | | | Min. () | Typ. | Max. | |
| Spectral Half Bandwidth | I _F =20mA | | O | / | -- | 15 | -- | nm |
| | | | YG | | -- | 15 | -- | |
| Forward Voltage | I _F =20mA | V _F | O | 1L | 1.8 | -- | 2.4 | V |
| | | | YG | 1L | 1.8 | -- | 2.4 | |
| Dominant wavelength | I _F =20mA | λ _d | O | G00 | 630 | -- | 635 | nm |
| | | | | H00 | 635 | -- | 640 | nm |
| | | | YG | A20 | 562.5 | -- | 565.0 | nm |
| | | | | B10 | 565.0 | -- | 567.5 | nm |
| | | | | B20 | 567.5 | -- | 570.0 | nm |
| | | | | C10 | 570.0 | -- | 572.5 | nm |
| | | | | C20 | 572.5 | -- | 575.0 | nm |
| Luminous Intensity | I _F =20mA | I _v | O | 1BS | 40 | -- | 90 | mcd |
| | | | YG | 1EO | 30 | -- | 50 | mcd |
| Viewing Angle | I _F =20mA | | | | -- | 140 | -- | deg |
| Reverse Current | V _R =5V | I _R | | | -- | -- | 10 | A |
| Thermal Resistance. | I _F =20mA | R _{THJ-S} | | | -- | -- | 450 | /W |

Notes : V_R=5V For test conditions. V_R=5V



Table 1-2 Absolute Maximum Ratings at Ts=25°C

| Parameter | Symbol | Rating | | Units |
|-------------------------------|-----------|-----------|----|-------|
| | | O | YG | |
| Power Dissipation | P_d | 72 | 72 | mW |
| Forward Current | I_F | 30 | | mA |
| Peak Forward Current Of Pulse | I_{FP} | 60 | | mA |
| Electrostatic Discharge (HBM) | E_{SD} | 2000 | | V |
| Operating Temperature | T_{opr} | -40 ~ +85 | | |
| Storage Temperature | T_{stg} | -40 ~ +85 | | |
| Junction Temperature | T_j | | | |

Notes

- 1/10 Duty cycle, 0.1ms pulse width.
- The above forward voltage measurement allowance tolerance is $\pm 0.1V$.
- The above dominant wavelength measurement allowance tolerance is $\pm 2nm$.
- The above luminous intensity measurement allowance tolerance $\pm 10\%$.
- Care is to be taken that power dissipation does not exceed the absolute maximum rating of the product.
- All measurements were made under the standardized environment of Refond.
- When the LEDs are in operation the maximum current should be decided after measuring the package temperature, junction temperature should not exceed the maximum rate

1.6 Typical Optical Characteristics Curves

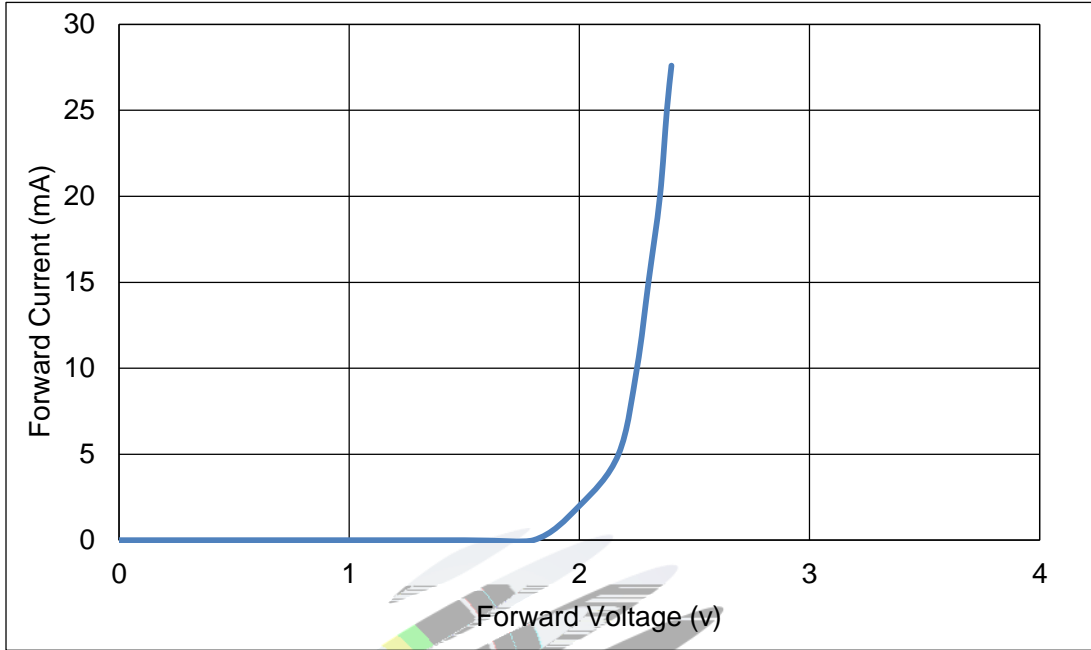


Fig.1-6 Forward Voltage Vs Forward Current

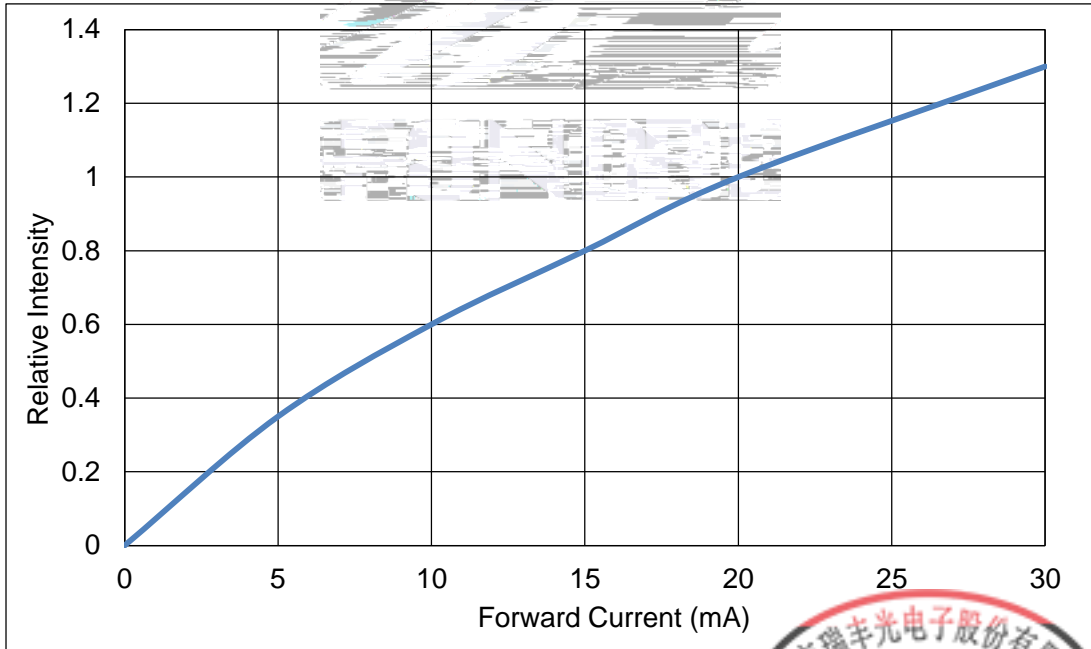
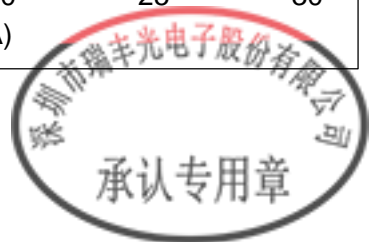


Fig.1-7 Forward Current Vs Relative Intensity



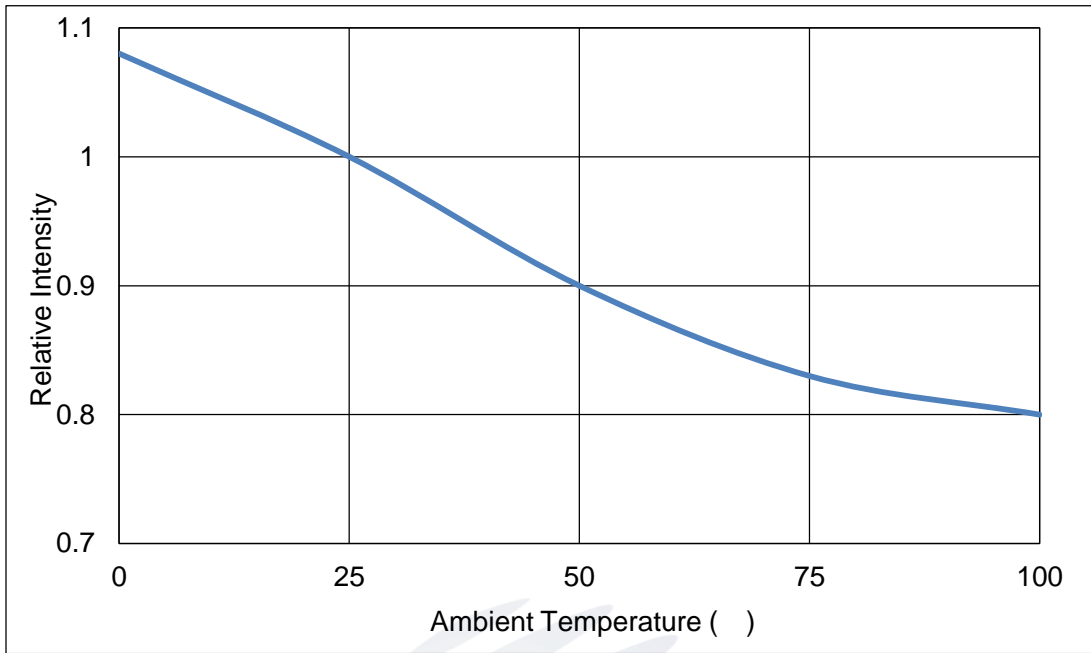


Fig.1-8 Pin Temperature Vs Relative Intensity

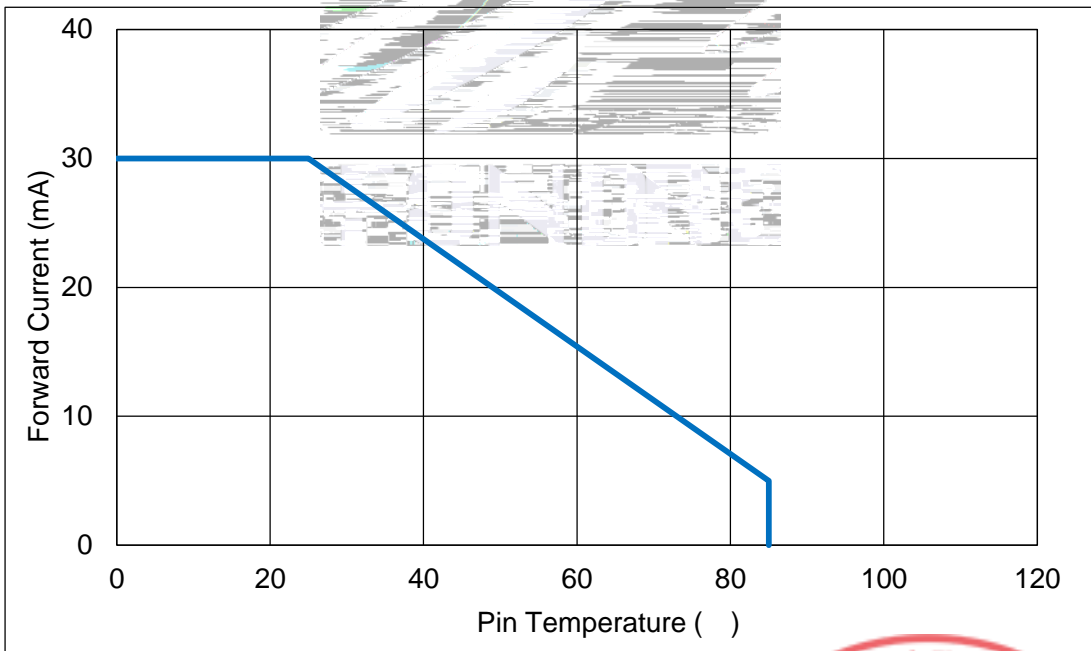


Fig.1-9 Pin Temperature Vs Forward Current



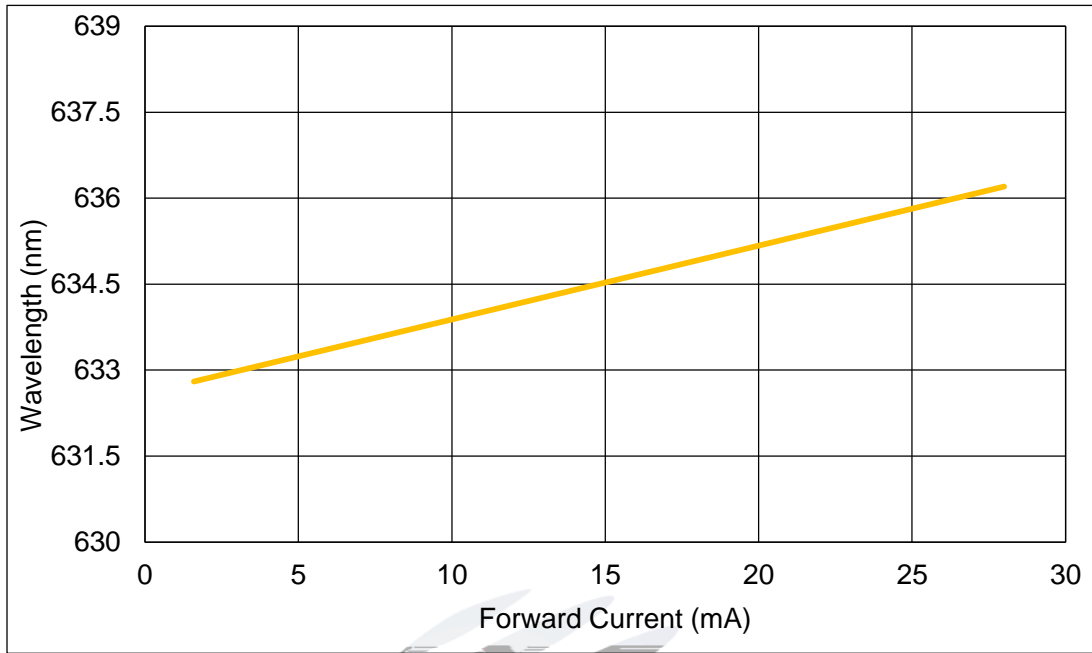


Fig.1-10 Forward Current Vs Dominate Wavelength (Ta=25)

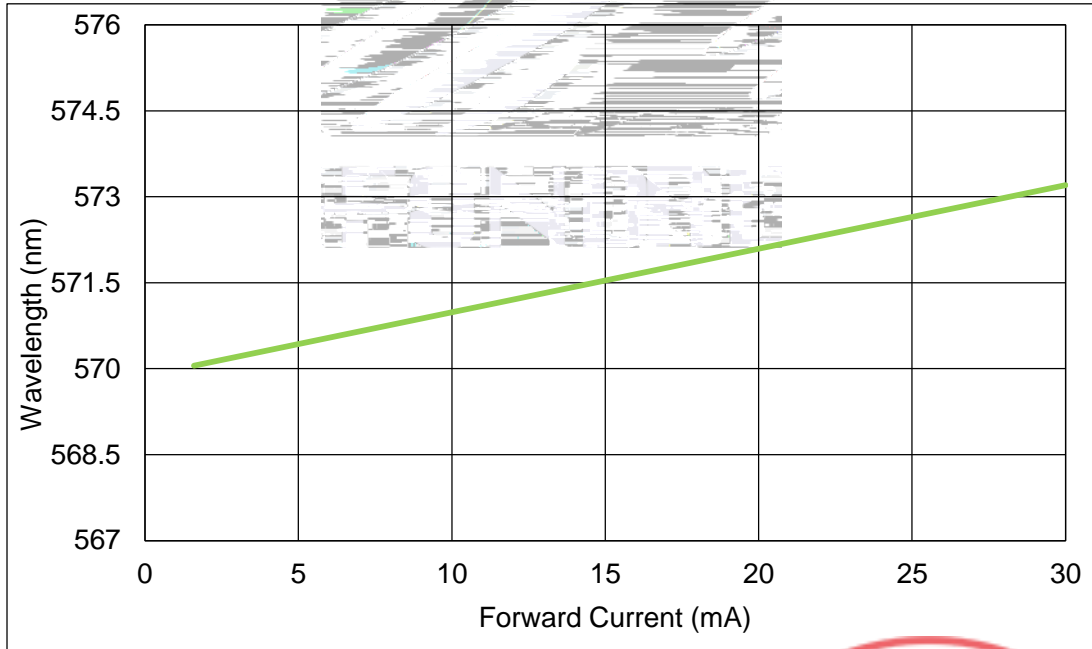


Fig.1-11 Forward Current Vs Dominate Wavelength (Ta=25)



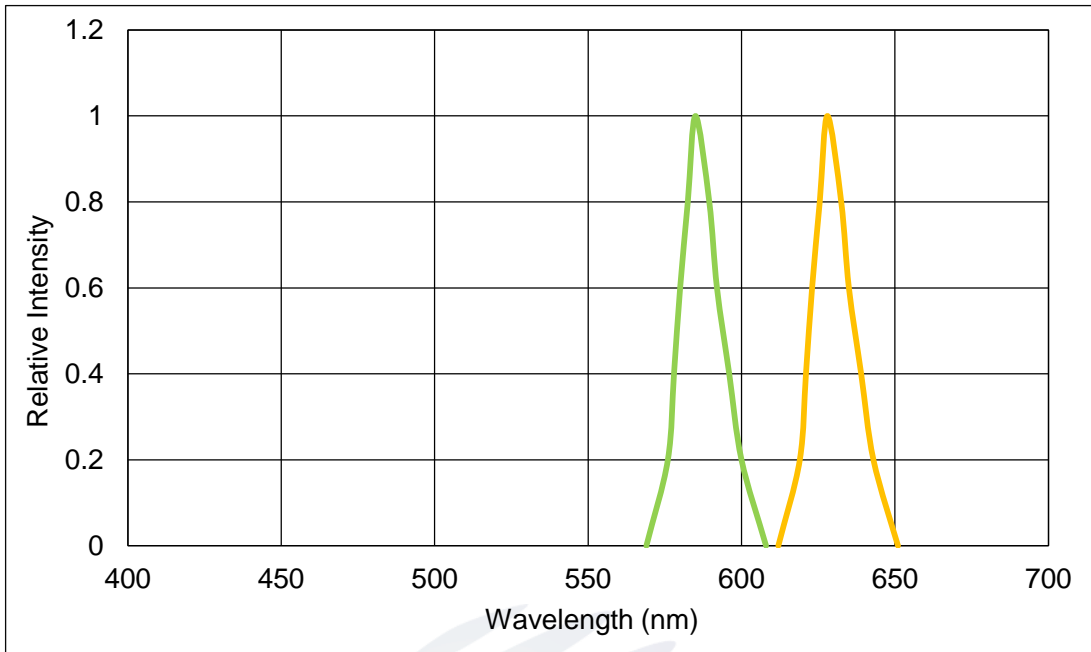


Fig.1-12 Relative Intensity Vs Wavelength (Ta=25)

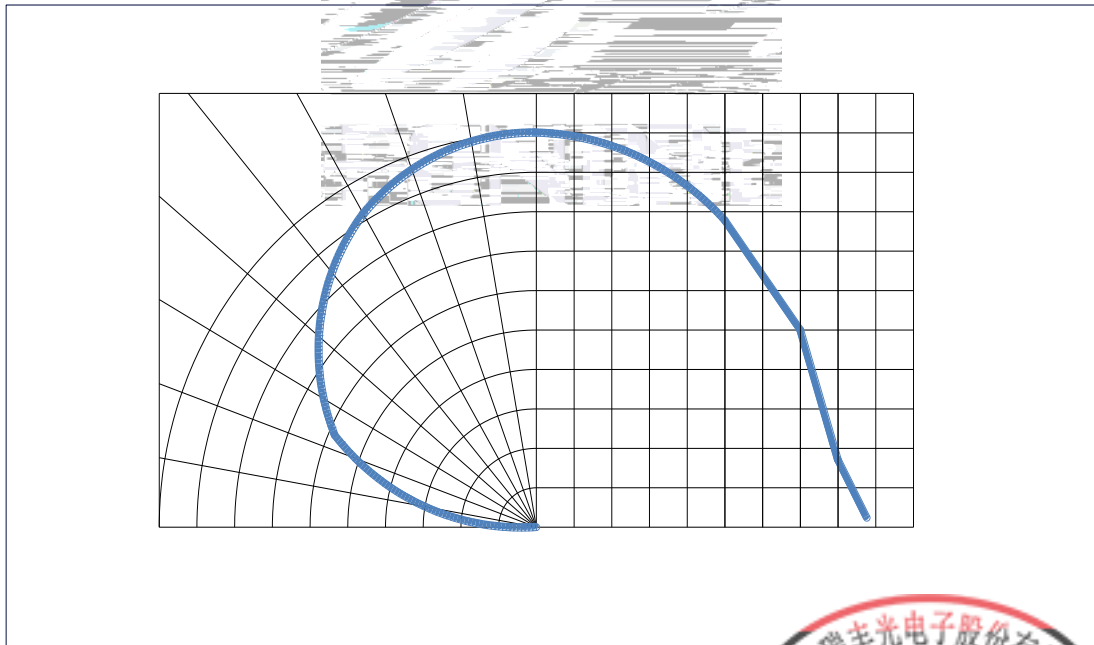
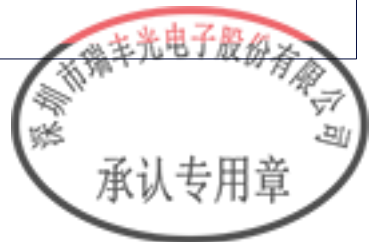


Fig.1-13 Diagram characteristics of radiation



2. Packaging

2.1 Packaging Specification

Package: 3000pcs/reel. 3000pcs

2.1.1 Carrier Tape Dimension

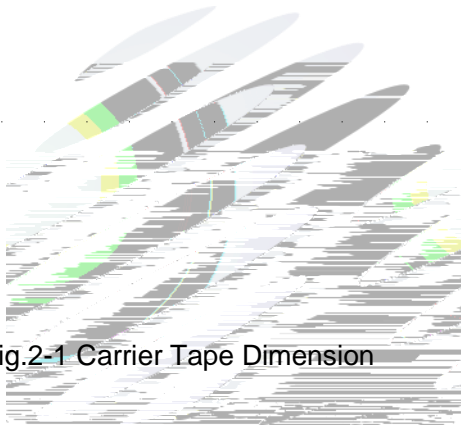
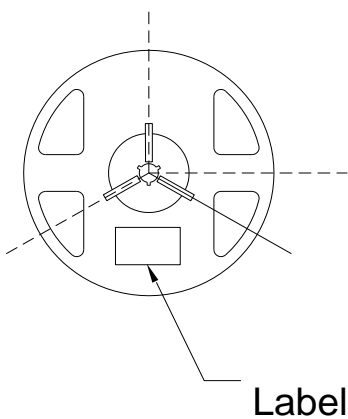


Fig.2-1 Carrier Tape Dimension

2.1.2 Reel Dimension



Label

Fig.2-2 Reel Dimension

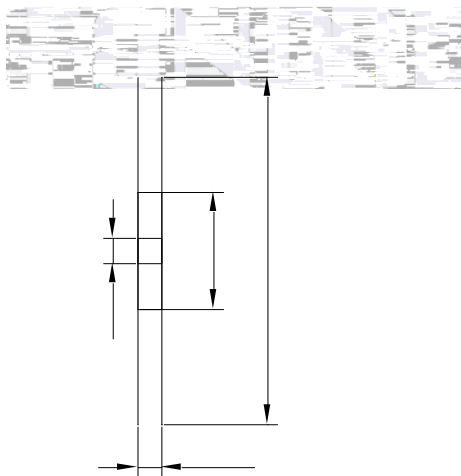


Table 2-1 Dimension

| | |
|---|------------|
| A | 8.0 0.1mm |
| B | 178 1mm |
| C | 60 1mm |
| D | 13.0 0.5mm |

Notes

The tolerances unless mentioned $\pm 0.1\text{mm}$. Unit : mm



2.1.3 Label Form Specification

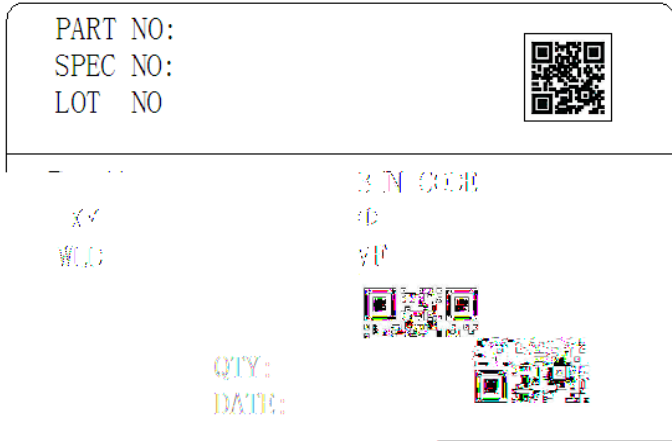


Table 2-2 Parameter

| | |
|----------------|------------------|
| PART NO. | Part Number |
| SPEC NO. | Spec Number |
| LOT NO. | Lot Number |
| BIN CODE | Bin Code |
| | Luminous flux |
| XY | Chromaticity Bin |
| V _F | Forward Voltage |
| WLD | Wavelength |
| QTY | Packing Quantity |
| DATE | Made Date |

Fig. 2-3 Label Form Specification

2.2 Moisture Resistant Packing



Fig.2-4 Moisture Resistant Packing



2.3 Cardboard Box

Fig.2-5 Cardboard Box

2.4 Reliability Test Items And Conditions

Table 2-3 Reliability Test Items And Conditions

| Test Items | Ref.Standard | Test Condition | Time | Quantity | Ac/Re / |
|-------------------|--------------|--------------------------|---------|----------|---------|
| Reflow | JESD22-B106 | Temp:260 max T=10 sec | 2 times | 22Pcs. | 0/1 |
| Temperature Cycle | JESD22-A104 | | | | |

2.5 Criteria For Judging Damage

Table 2-4 Criteria For Judging Damage

| Test Items | Symbol | Test Condition | Criteria For Judgement | |
|-----------------|--------|-------------------|------------------------|-------------|
| | | | Min. | Max. |
| Forward Voltage | V_F | $I_F=20\text{mA}$ | - | U.S.L*)x1.1 |
| Reverse Current | I_R | $V_R= 5\text{V}$ | - | U.S.L*)x2.0 |
| Luminous Flux | | $I_F=20\text{mA}$ | L.S.L*)x0.7 | - |

Notes

1.U.S.L: Upper standard level

L.S.L: Lower standard level

2.The above reliability tests is based on the verification of a single/strip LED of Refond's existing experimental platform,the reliability experiment was taken under good heat dissipation conditions. When customers applies the LED to the series and parallel circuit,should take consideration of all the factors such as the current, voltage distribution, heat dissipation and others.

3.The technical information shown in the data sheets is limited to the typical characteristics and circuit examples of the referenced products. It does not constitute the warranting of industrial property nor the granting of any license.



3. SMT Reflow Soldering Instructions SMT

3.1 SMT Reflow Soldering Instructions SMT

Fig.3-1 SMT Reflow Soldering Instructions SMT

Table 3-1 Parameter

| | | |
|--|-----------------------|-------------------|
| Average temperature rise speed | T_{smax} T_P | 3 °C/ Max 3 °C/ s |
| Preheating: minimum temperature | (T_{smin}) | 150 °C |
| Preheating: Max temperature | (T_{smax}) | 200 °C |
| Preheating: Time | T_{smin} T_{smax} | 60 - 120 60s-120s |
| Time limited to maintain high temperature: the temperature | (T_L) | 217 °C |
| Time limited to maintain high temperature: The Time | (t_L) | 60 -150 60s-150s |
| Peak /Classification of temperature: | / (T_P) | 260 °C |
| Time limit classification of peak temperature time | t_p | 10 Max 10s |

b 20o/P /MCID 105-BDC q433.o/P /MCID 1057AT1 0 0 1 392.47 .69 lwcathratu20o0

Notes

(1)Reflow soldering should not be done more than twice. If more than 24 hours between the two solderings , LED will be damaged.

(2)Whensoldering , do not put stress on the LEDs during heating.

3.1.1 Soldering Iron

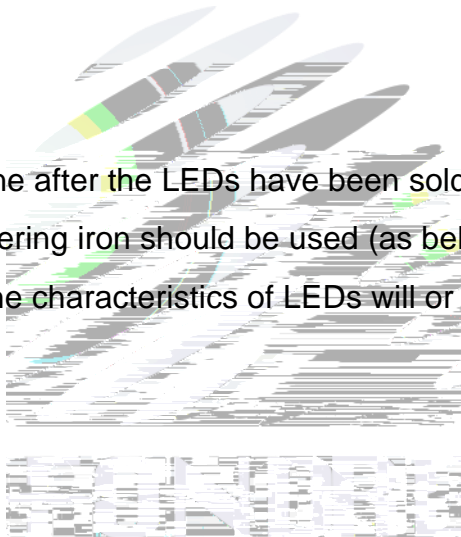
(1) When do soldering by hand, keep the temperature of iron below less 300 less than 3 seconds

(2) Soldering by hand should be done only one time.

3.1.2 Repairing

Repairing should not be done after the LEDs have been soldered. When repairing is unavoidable,a double-head soldering iron should be used (as below figure). It should be confirmed in advance whether the characteristics of LEDs will or not be damaged by repairing.

LED



3.1.3 Cautions

(1) Components should not be mounted on warped (non coplanar) portion of PCB. After soldering, do not warp the circuit board.LED

(2) Do not apply mechanical force or excess vibration during the cooling process to normal temperature after soldering. Do not rapidly cool device after soldering.



4. Handling Precautions

4.1 Handling Precautions

(1) LED operating environment and sulfur element composition can not be over 100PPM in the LED mating usage material. This is provided for informational purposes only and is not a warranty or endorsement. LED

(2) In order to prevent external material from getting into the inside of LED, which may cause the malfunction of LED, the single content of Bromine element is required to be less than 900PPM, the single content of Chlorine element is required to be less than 900PPM, the total content of Bromine element and Chlorine element in the external materials of the application products is required to be less than 1500PPM. This is provided for informational purposes only and is not a warranty or endorsement.

(3) VOCs (Volatile organic compounds) emitted from materials used in the construction of fixtures can penetrate silicone encapsulants of LEDs and discolor when exposed to heat and photonic energy. The result can be a significant loss of light output from the fixture. Knowledge of the properties of the materials selected to be used in the construction of fixtures can help prevent these issues. Refond advises against the use of any chemicals or materials that have been found or are suspected to have an adverse effect on device performance or reliability. To verify compatibility, Refond recommends that all chemicals and materials be tested in the specific application and environment for which they are intended to be used. Attaching LEDs, do not use adhesives that outgas organic vapor.



(4) Handle the component along the side surface by using forceps or appropriate tools; Do not directly touch or Handle the silicone lens surface, it may damage the internal circuitry.

Fig 4-1

(5) In designing a circuit,the current through each LED can not exceed the absolute maximum rating specified for each LED.In the mean while,resistors for protection should be applied,otherwise slight voltage shift will cause big current change,burn out may happen. The



LED.

Table 4-1 Storage

| Conditions | | Temperature | Humidity | Time |
|------------|-----------------------------|-------------|----------|-------------------------|
| Storage | Before Opening Aluminum Bag | 30 | 75% | Within 1 Year From Date |
| | After Opening Aluminum Bag | 30 | 60% | 168hours 168 |
| Baking | | 60 ± 5 | - | 24hours 24 |

(8) If the moisture absorbent material (silica gel) has faded away or the LEDs have exceeded the storage time, baking treatment should be performed after unpacking and based on the following condition (60±5) °C for above 24 hours.

If the package is flatulence or damaged, please notify the sales staff to assist.



Declare

This specification is written both in English and in Chinese and the latter is formal.